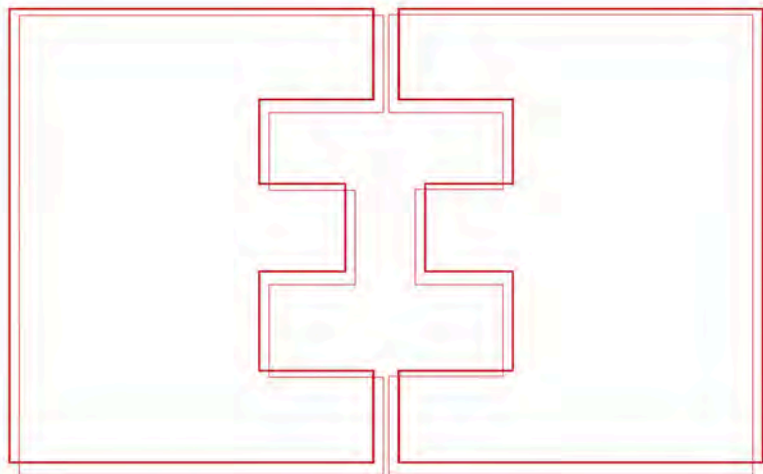
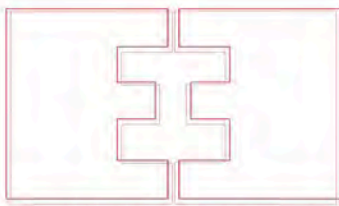


BRILLIANCE



EVELYN EARNEST, INC.





EVELYN EARNEST, INC.

P.O. BOX 425

EDEN, NC 27288

P. 336-627-0170

F. 336-627-0526

E. SAMPLES@EVELYNEARNEST.COM

WWW.EVELYNEARNEST.COM

## BRILLIANCE TECHNICAL DATA

	CONTENT	REPEAT	WIDTH	WEIGHT	ABRASION	DESIGN
BAGUETTE	100% POLYESTER	3.4"V 7.5"H	54"	10.4 OZ/YD	30,000+	CUTRITE
BRAILE	100% POLYESTER	1.8"V .8"H	54"	10 OZ/YD	30,000+	CUTRITE
CUFFLINKS	100% POLYESTER	1.7"V 1.25"H	54"	9.8 OZ/YD	30,000+	CUTRITE
GLASSGOW	100% POLYESTER	4.5"V 4.6"H	54"	10 OZ/YD	30,000+	CUTRITE
GYPSY	100% POLYESTER	2.2"V 2.2"H	54"	10 OZ/YD	30,000+	CUTRITE
JOY	100% POLYESTER	4.5"V 5.9"H	54"	10.4 OZ/YD	30,000+	CUTRITE
RUNNINGMAN	100% POLYESTER	1.3"V 2.4"H	54"	11 OZ/YD	30,000+	CUTRITE
SKETCH	100% POLYESTER	6.8"V 5.7"H	54"	11.2 OZ/YD	30,000+	CUTRITE
SPACKLE	100% POLYESTER	4.5"V 4.4"H	54"	11 OZ/YD	30,000+	CUTRITE
WILLOW	100% POLYESTER	2.27"V 4.4"H	54"	11.2 OZ/YD	30,000+	CUTRITE

COLORFASTNESS TO LIGHT: CLASS 5 (40 HRS.)

CROCKING: WET CLASS 5

DRY CLASS 5

CLEANING CODE: WS

FINISH: ACRYLIC & TEFLON

FLAMMABILITY:

CAL. TB 117, SECTION E, 191-53, CLASS 1

UFAC, CLASS 1

NFPA 260A, CLASS 1

BIFMA, CLASS 1

FABRIC SAMPLES ARE READILY AVAILABLE UPON REQUEST.  
CALL, FAX, OR ORDER SAMPLES ONLINE AT [WWW.EVELYNEARNEST.COM](http://WWW.EVELYNEARNEST.COM)

SLIGHT COLOR DIFFERENCES MAY EXIST BETWEEN PRINTED IMAGES AND ACTUAL FABRICS.

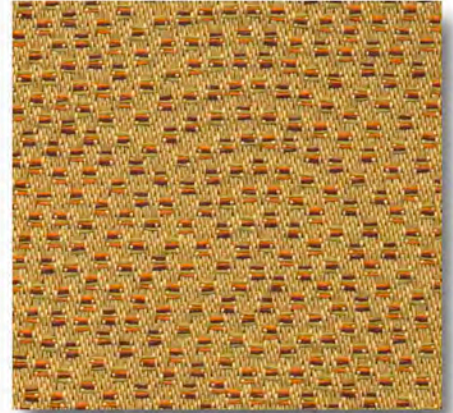




MOSAIC



CONFETTI



ANNATO SEED

# BAGUETTE

CONTENT: 100% POLYESTER

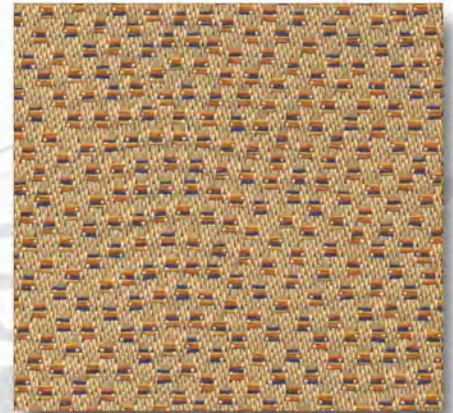
FINISH: ACRYLIC & TEFLON

REPEAT: 3.4"V x 7.5"H

WIDTH: 54"

ABRASION: 30,000+

DIRECTION: CUTRITE



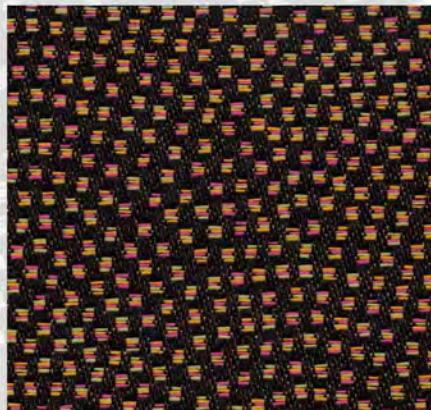
DUNES



TWILIGHT



CHALKBOARD

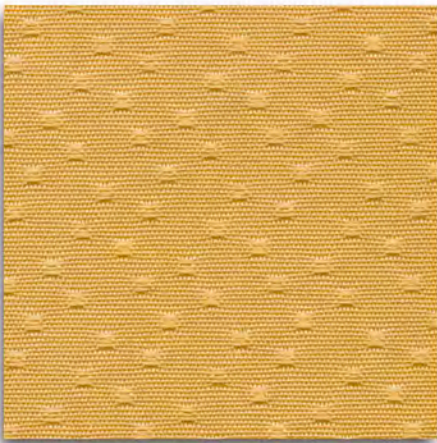


PHLOX

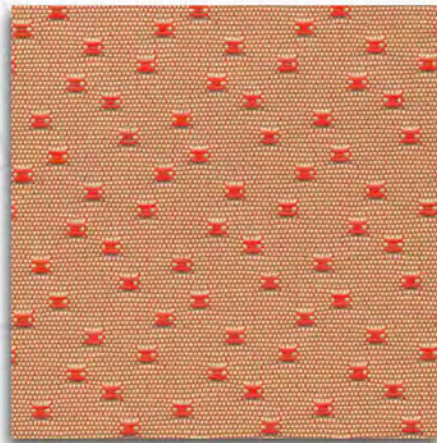


PEACOCK

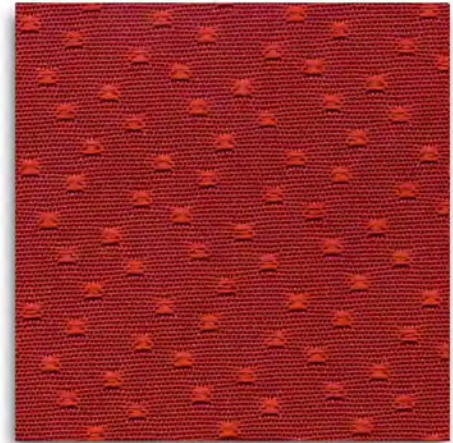




WHEAT



DP CORAL



PIMENTO



CHIVE

# BRAILLE

CONTENT: 100% POLYESTER

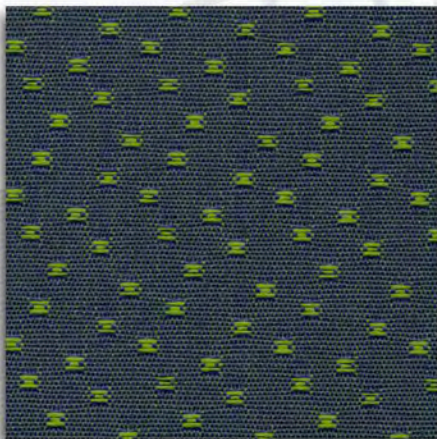
FINISH: ACRYLIC & TEFLON

REPEAT: 1.8"V x .8"H

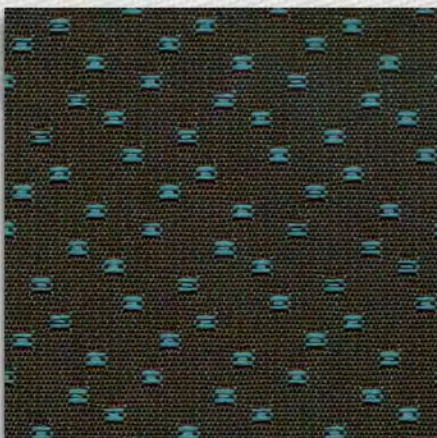
WIDTH: 54"

ABRASION: 30,000+

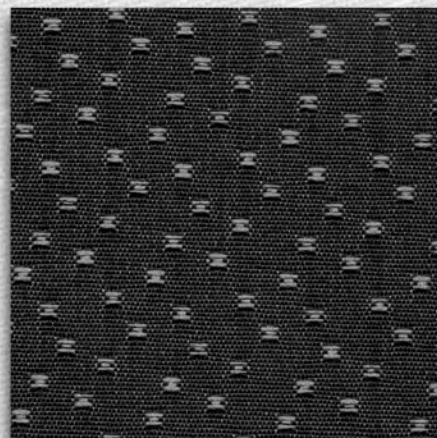
DIRECTION: CUTRITE



LIME



PAGODA



STEEL

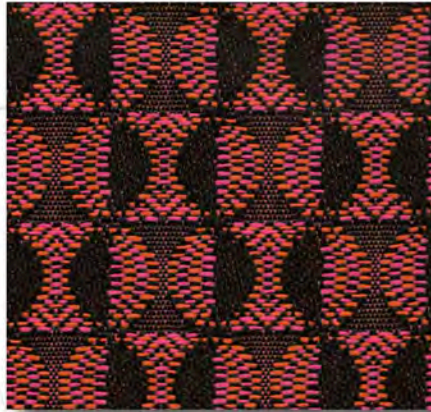


COAL





MOSAIC



POSEY



CHILI

# CUFFLINKS

CONTENT: 100% POLYESTER

FINISH: ACRYLIC & TEFLON

REPEAT: 1.7"V x 1.25"H

WIDTH: 54"

ABRASION: 30,000+

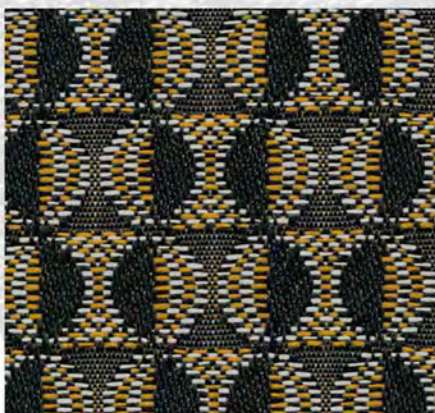
DIRECTION: CUTRITE



HAPPY



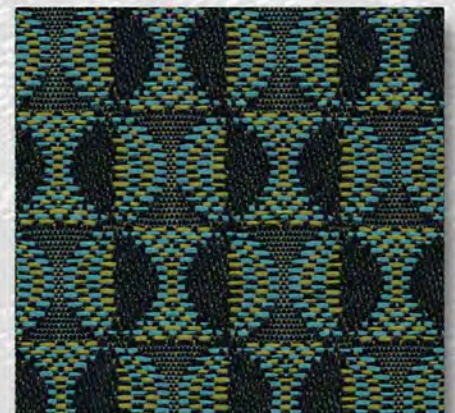
PALM



DARK KNIGHT

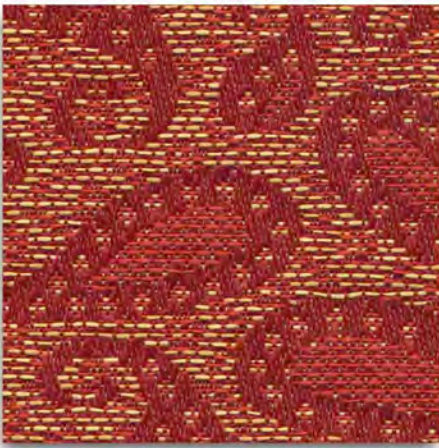


NAUTICAL



DARK LILY





JUNGLE RED



MOSAIC



PHLOX



CURRY

# GLASSGOW

CONTENT: 100% POLYESTER

FINISH: ACRYLIC & TEFLON

REPEAT: 4.5" V x 4.6" H

WIDTH: 54"

ABRASION: 30,000+

DIRECTION: CUTRITE



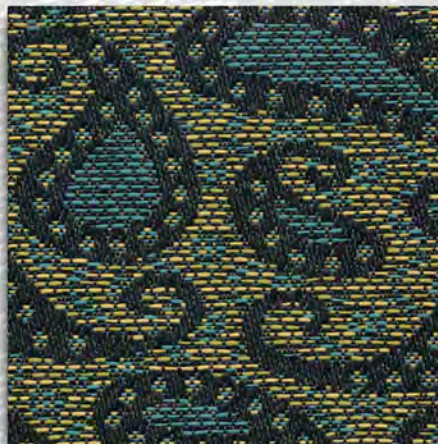
PEBBLES



CEMENT



CITRUS



PEACOCK

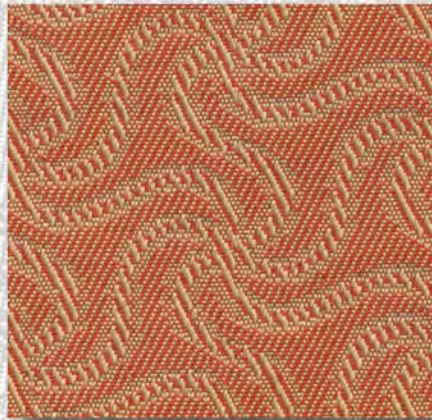


BLUE CHIP





PHLOX



CORAL



DEEP CLOVER

# GYPSY

CONTENT: 100% POLYESTER

FINISH: ACRYLIC & TEFLON

REPEAT: 2.2"V x 2.2"H

WIDTH: 54"

ABRASION: 30,000+

DIRECTION: CUTRITE



BAYOU



PROSECO

# JOY

CONTENT: 100% POLYESTER

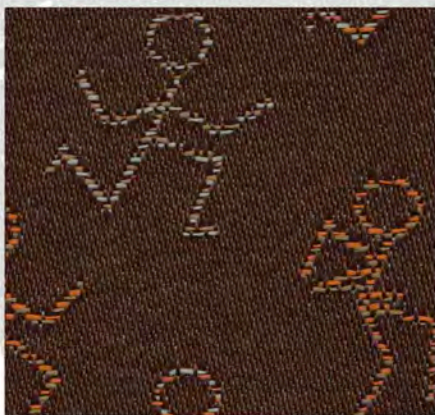
FINISH: ACRYLIC & TEFLON

REPEAT: 4.5"V x 5.9"H

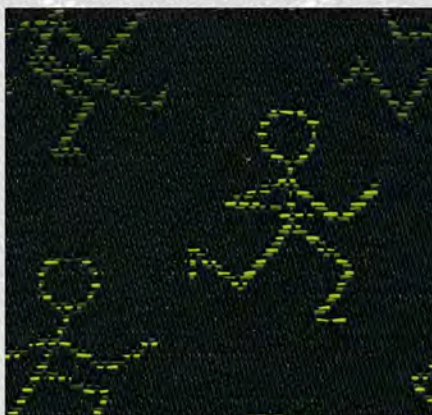
WIDTH: 54"

ABRASION: 30,000+

DIRECTION: CUTRITE



MOSAIC



NEON





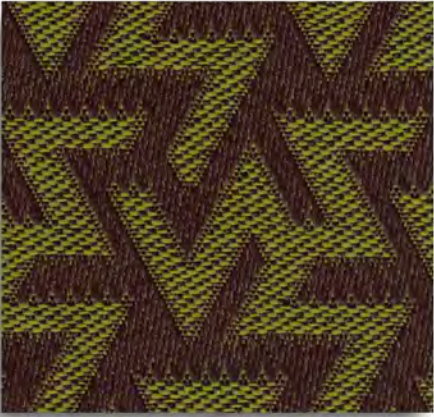
MALTED



DIJON



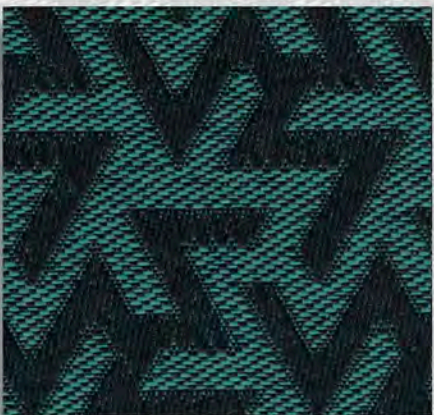
CORAL



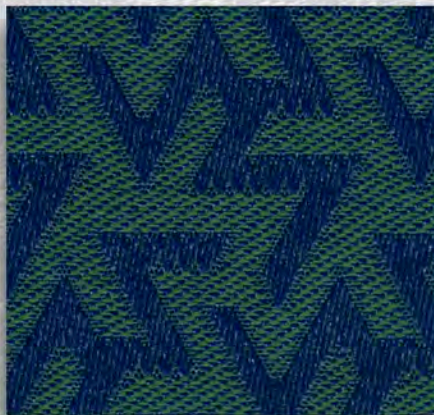
CLOVER



PARROT



BAYOU



ALPINE GREEN



STEEL

# RUNNINGMAN

CONTENT: 100% POLYESTER

FINISH: ACRYLIC & TEFLON

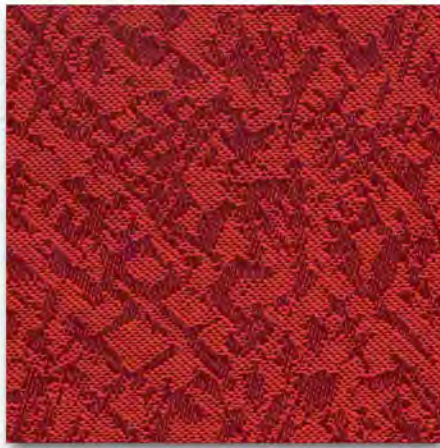
REPEAT: 1.3"V x 2.4"H

WIDTH: 54"

ABRASION: 30,000+

DIRECTION: CUTRITE





PIMENTO



GOLDEN



MALTED

# SKETCH

CONTENT: 100% POLYESTER

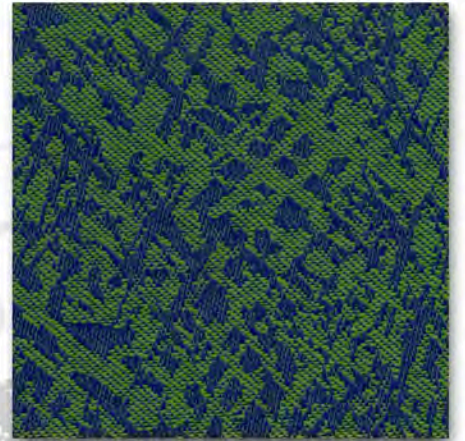
FINISH: ACRYLIC & TEFLON

REPEAT: 6.8"V x 5.7"H

WIDTH: 54"

ABRASION: 30,000+

DIRECTION: CUTRITE



LIME



BAYOU



CEMENT



COCOA

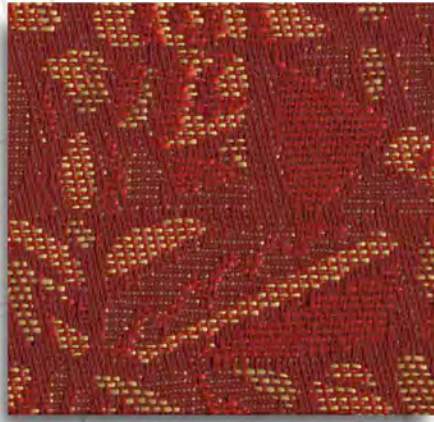


DUSK





CURRY



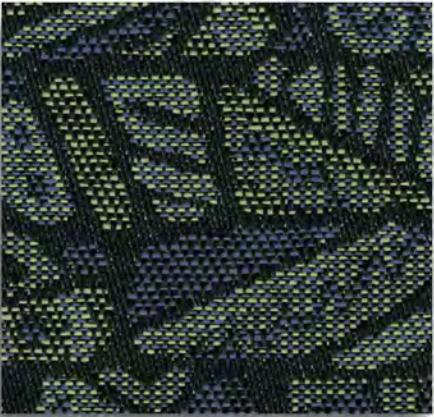
JUNGLE RED



PINATA



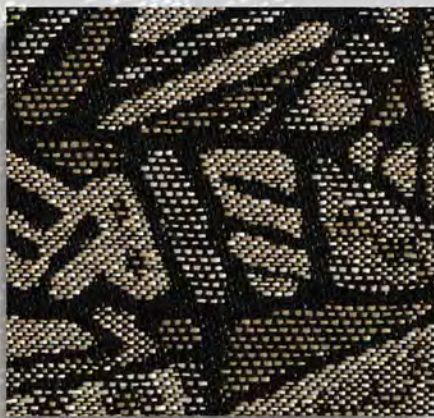
JUNIPER



ARCTIC



BLUE CHIP



BLACK SWAN

# SPACKLE

CONTENT: 100% POLYESTER

FINISH: ACRYLIC & TEFLON

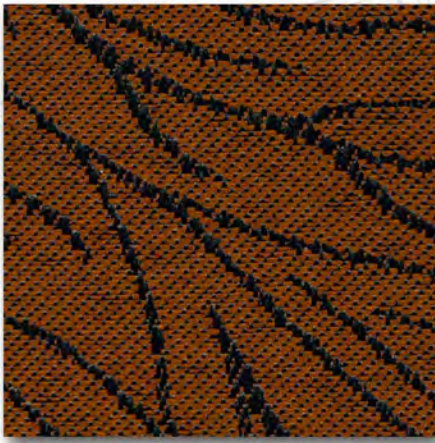
REPEAT: 4.5"V x 4.4"H

WIDTH: 54"

ABRASION: 30,000+

DIRECTION: CUTRITE

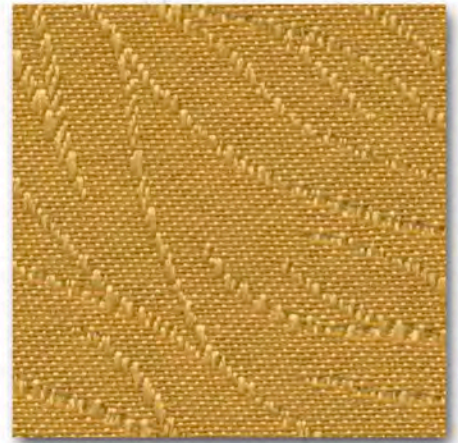




SEQUOIA

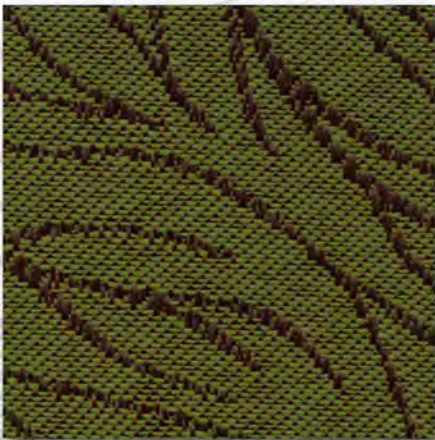


PIMENTO

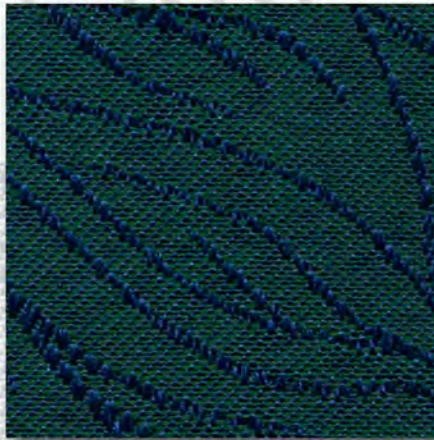


WHEAT

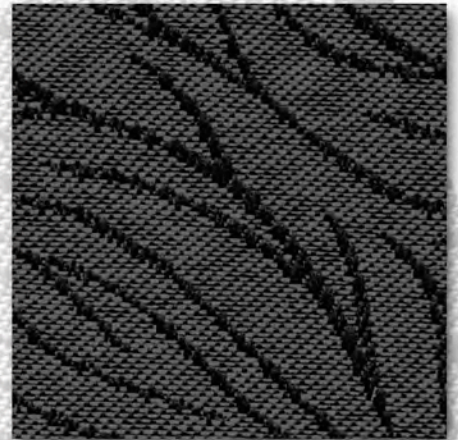
# WILLOW



DEEP CLOVER



ALPINE GREEN



STEEL

CONTENT: 100% POLYESTER

FINISH: ACRYLIC & TEFLON

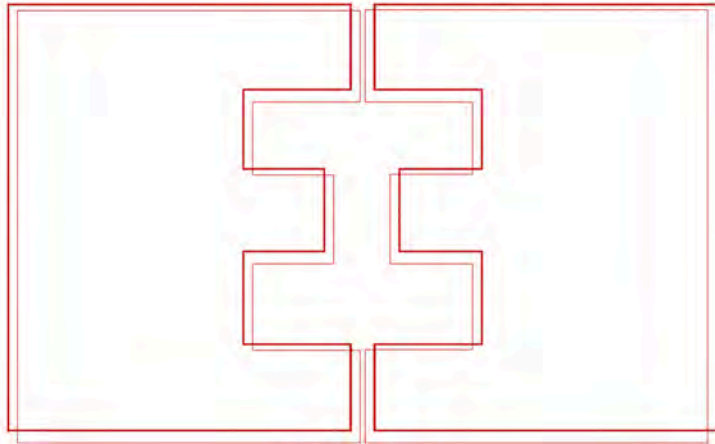
REPEAT: 2.27"V X 4.4"H

WIDTH: 54"

ABRASION: 30,000+

DIRECTION: CUTRITE





EVELYN EARNEST, INC.

P.O. BOX 425

EDEN, NC 27288

P. 336-627-0170

F. 336-627-0526

E. [SAMPLES@EVELYNEARNEST.COM](mailto:SAMPLES@EVELYNEARNEST.COM)

[WWW.EVELYNEARNEST.COM](http://WWW.EVELYNEARNEST.COM)

FABRIC SAMPLES ARE READILY AVAILABLE UPON REQUEST.  
CALL, FAX, OR ORDER SAMPLES ONLINE AT [WWW.EVELYNEARNEST.COM](http://WWW.EVELYNEARNEST.COM)

SLIGHT COLOR DIFFERENCES MAY EXIST BETWEEN PRINTED IMAGES AND ACTUAL FABRICS.